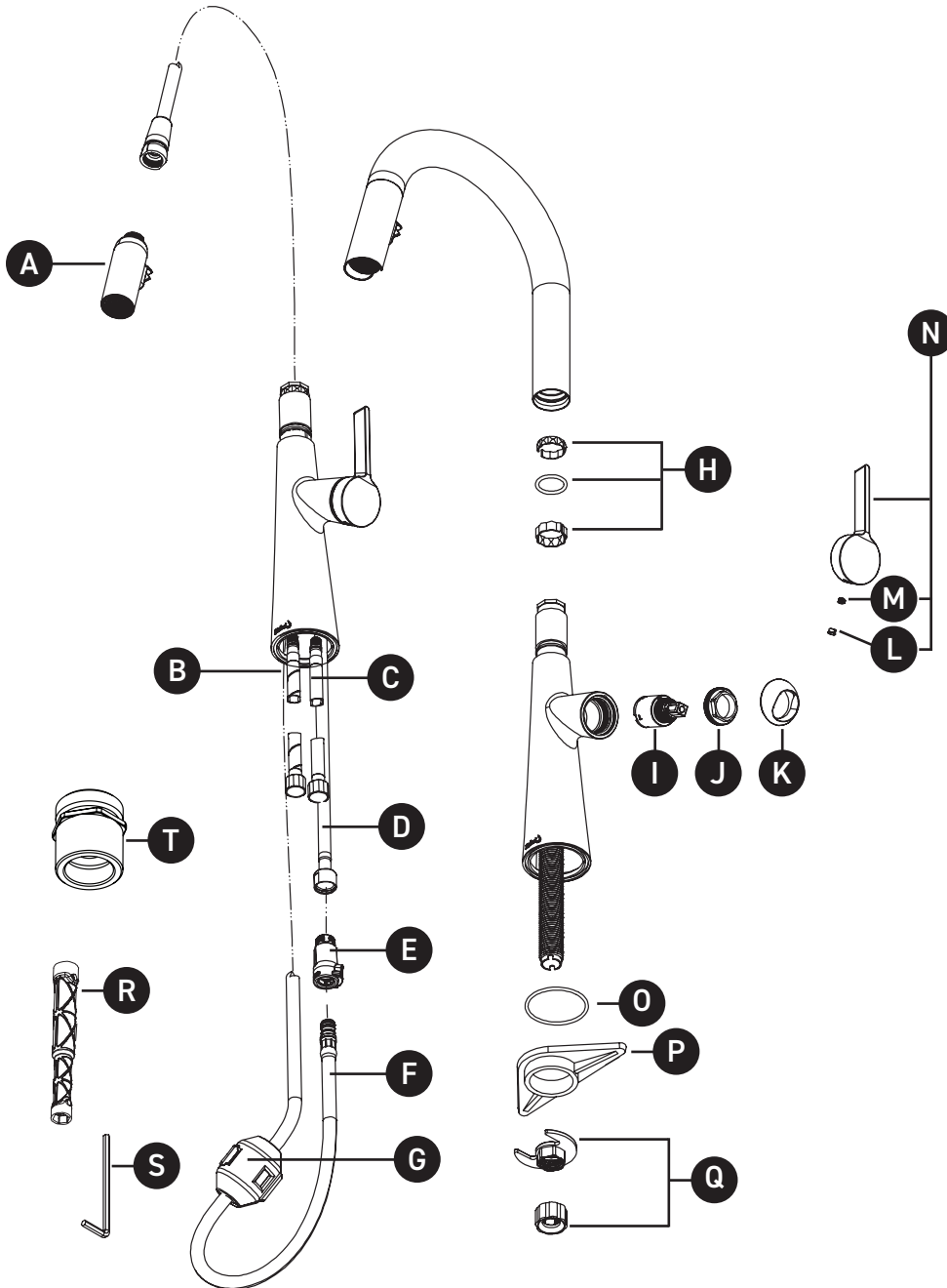


ORDER BY PART NUMBER

## ILLUSTRATED PARTS

### LK101-EM

Ludik Kitchen Tap with Spray



| ID | Kit Number         | Finish    |
|----|--------------------|-----------|
| A  | S4-381-EM          | N/A       |
| B  | S7-108-R-EM (Hot)  | N/A       |
| C  | S7-108-B-EM (Cold) | N/A       |
| D  | S7-128-EM          | N/A       |
| E  | S7-443             | N/A       |
| F  | S7-200             | N/A       |
| G  | S9-528             | N/A       |
| H  | S7-489             | N/A       |
| I  | S401-039-EM        | N/A       |
| J  | S305-337           | N/A       |
| *K | S052-073           | See below |
| *L | S003-030           | See below |
| M  | S152-040           | N/A       |
| *N | S1-894             | See below |
| O  | S225-460           | N/A       |
| P  | S390-085           | N/A       |
| Q  | 208331             | N/A       |
| R  | S500-009           | N/A       |
| S  | S505-025 (2.5mm)   | N/A       |
| T  | S7-996-EM          | N/A       |

#### \*Finish Determined by Suffix

| Finish | Description           |
|--------|-----------------------|
| C      | Chrome                |
| BK     | Black                 |
| BG     | Brushed Gold (PVD)    |
| SS     | Stainless Steel (PVD) |

+44 (0)1952 221 100  
www.riobel.design

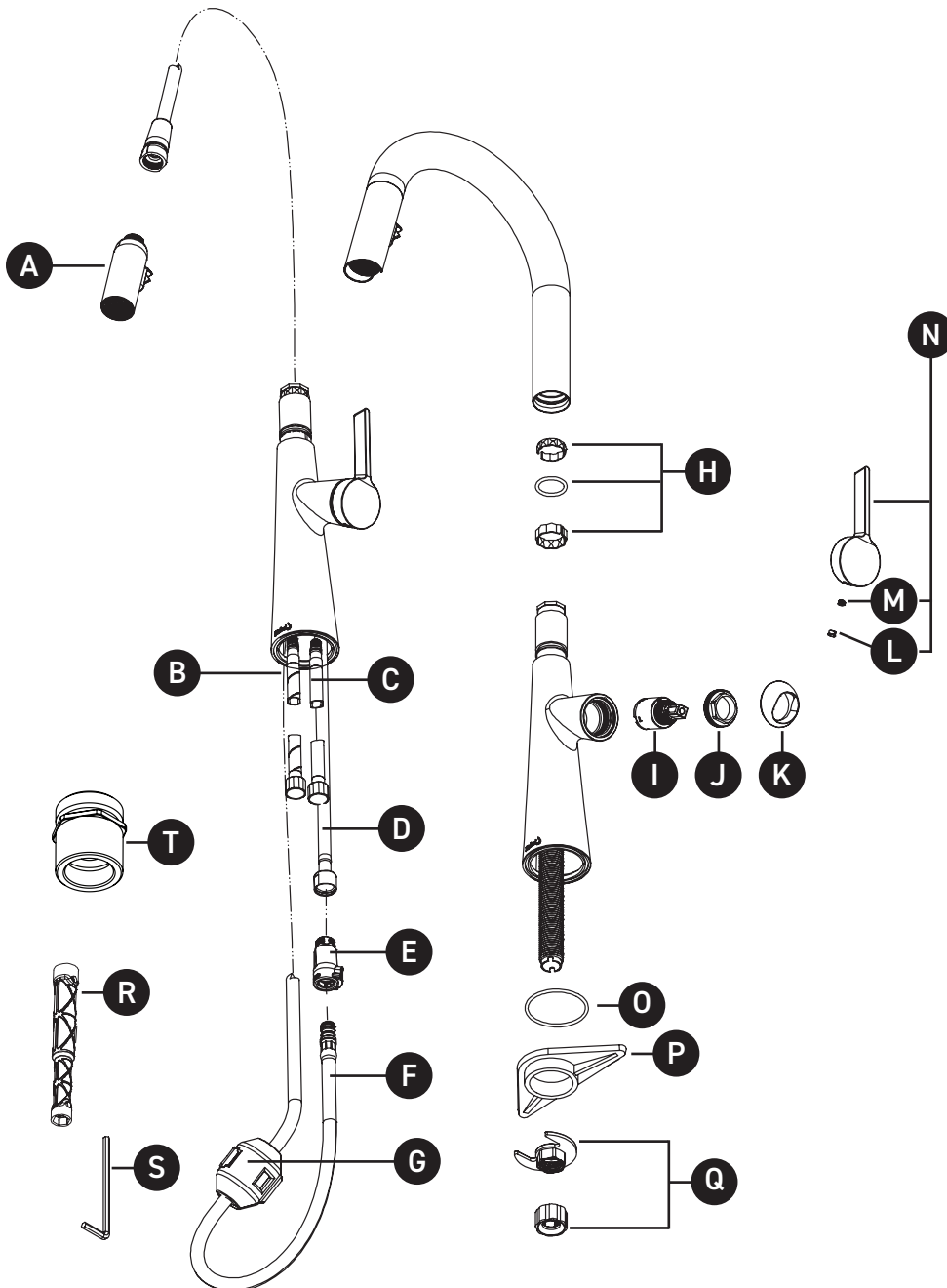
A DISTINCTIVE MEMBER OF THE HOUSE OF ROHL

## ABGEBILDETE TEILE

BESTELLUNG NACH ARTIKELNUMMER

### LK101-EM

Ludik Küchenarmatur mit Schlauchbrause



| ID | Bausatznummer      | Oberfläche  |
|----|--------------------|-------------|
| A  | S4-381-EM          | N/A         |
| B  | S7-108-R-EM (Heiß) | N/A         |
| C  | S7-108-B-EM (Kalt) | N/A         |
| D  | S7-128-EM          | N/A         |
| E  | S7-443             | N/A         |
| F  | S7-200             | N/A         |
| G  | S9-528             | N/A         |
| H  | S7-489             | N/A         |
| I  | S401-039-EM        | N/A         |
| J  | S305-337           | N/A         |
| *K | S052-073           | Siehe unten |
| *L | S003-030           | Siehe unten |
| M  | S152-040           | N/A         |
| *N | S1-894             | Siehe unten |
| O  | S225-460           | N/A         |
| P  | S390-085           | N/A         |
| Q  | 208331             | N/A         |
| R  | S500-009           | N/A         |
| S  | S505-025 (2.5mm)   | N/A         |
| T  | S7-996-EM          | N/A         |

#### Oberfläche festgelegt von "Suffix"

| Oberfläche | Beschreibungen         |
|------------|------------------------|
| C          | Chrom Glanz            |
| BK         | Schwarz                |
| BG         | Gold Gebürstet (PVD)   |
| SS         | Edelstahl-Finish (PVD) |

+44 (0)1952 221 100  
www.riobel.design

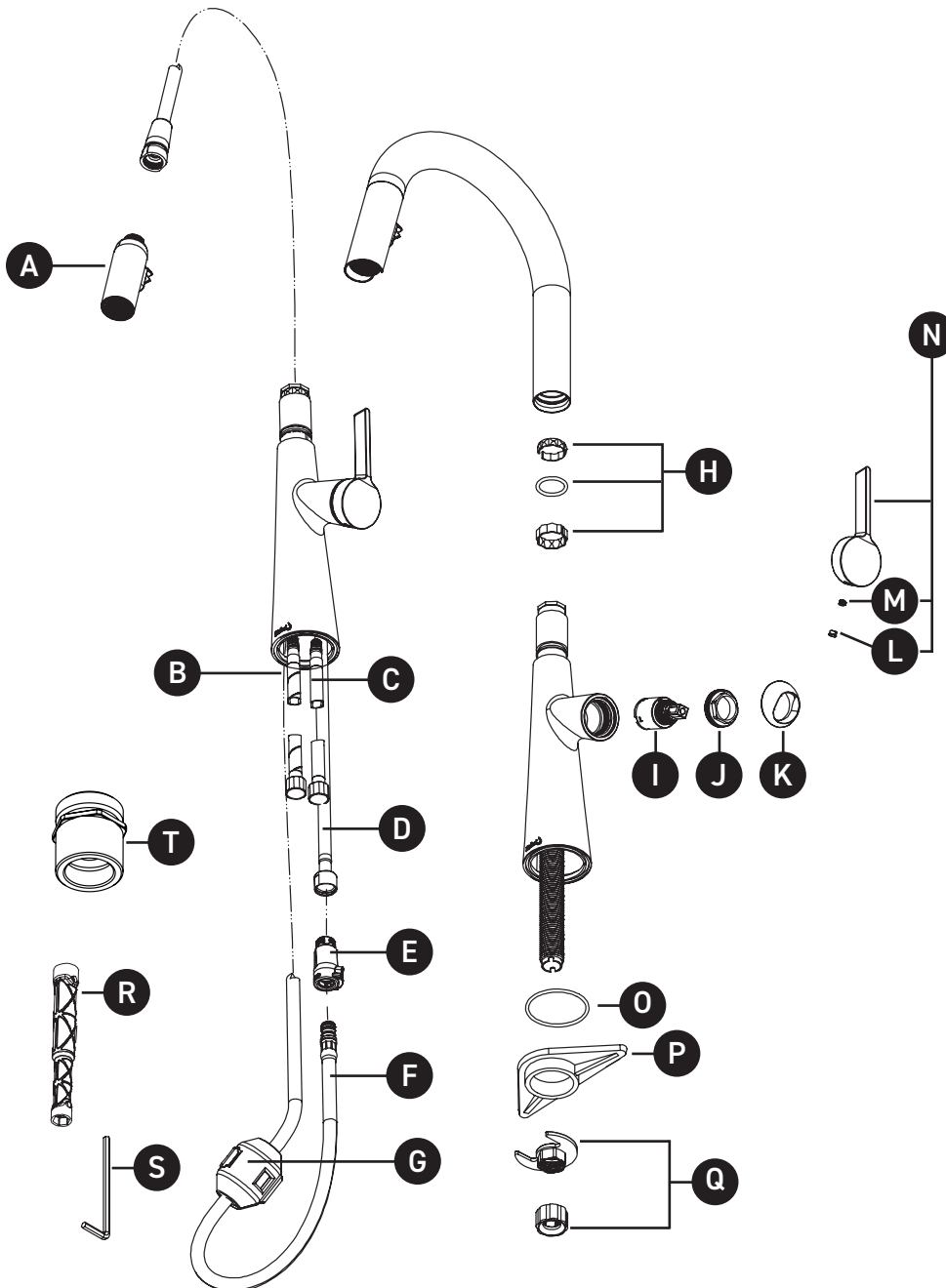
A DISTINCTIVE MEMBER OF THE HOUSE OF ROHL

## ILLUSTRATIONS DES PIÈCES

VEUILLEZ EFFECTUER VOTRE COMMANDE  
PAR NO DE RÉFÉRENCE

### LK101-EM

Mitigeur de cuisine Ludik avec douchette



| ID | Référence du kit    | Finition        |
|----|---------------------|-----------------|
| A  | S4-381-EM           | N/A             |
| B  | S7-108-R-EM (Chaud) | N/A             |
| C  | S7-108-B-EM (Froid) | N/A             |
| D  | S7-128-EM           | N/A             |
| E  | S7-443              | N/A             |
| F  | S7-200              | N/A             |
| G  | S9-528              | N/A             |
| H  | S7-489              | N/A             |
| I  | S401-039-EM         | N/A             |
| J  | S305-337            | N/A             |
| *K | S052-073            | Voir ci-dessous |
| *L | S003-030            | Voir ci-dessous |
| M  | S152-040            | N/A             |
| *N | S1-894              | Voir ci-dessous |
| O  | S225-460            | N/A             |
| P  | S390-085            | N/A             |
| Q  | 208331              | N/A             |
| R  | S500-009            | N/A             |
| S  | S505-025 (2.5mm)    | N/A             |
| T  | S7-996-EM           | N/A             |

#### Finition déterminée par le Suffixe

| Finition | Description            |
|----------|------------------------|
| C        | Chrome poli            |
| BK       | Noir                   |
| BG       | Or brossé (PVD)        |
| SS       | Acier inoxydable (PVD) |

+44 (0)1952 221 100  
www.riobel.design

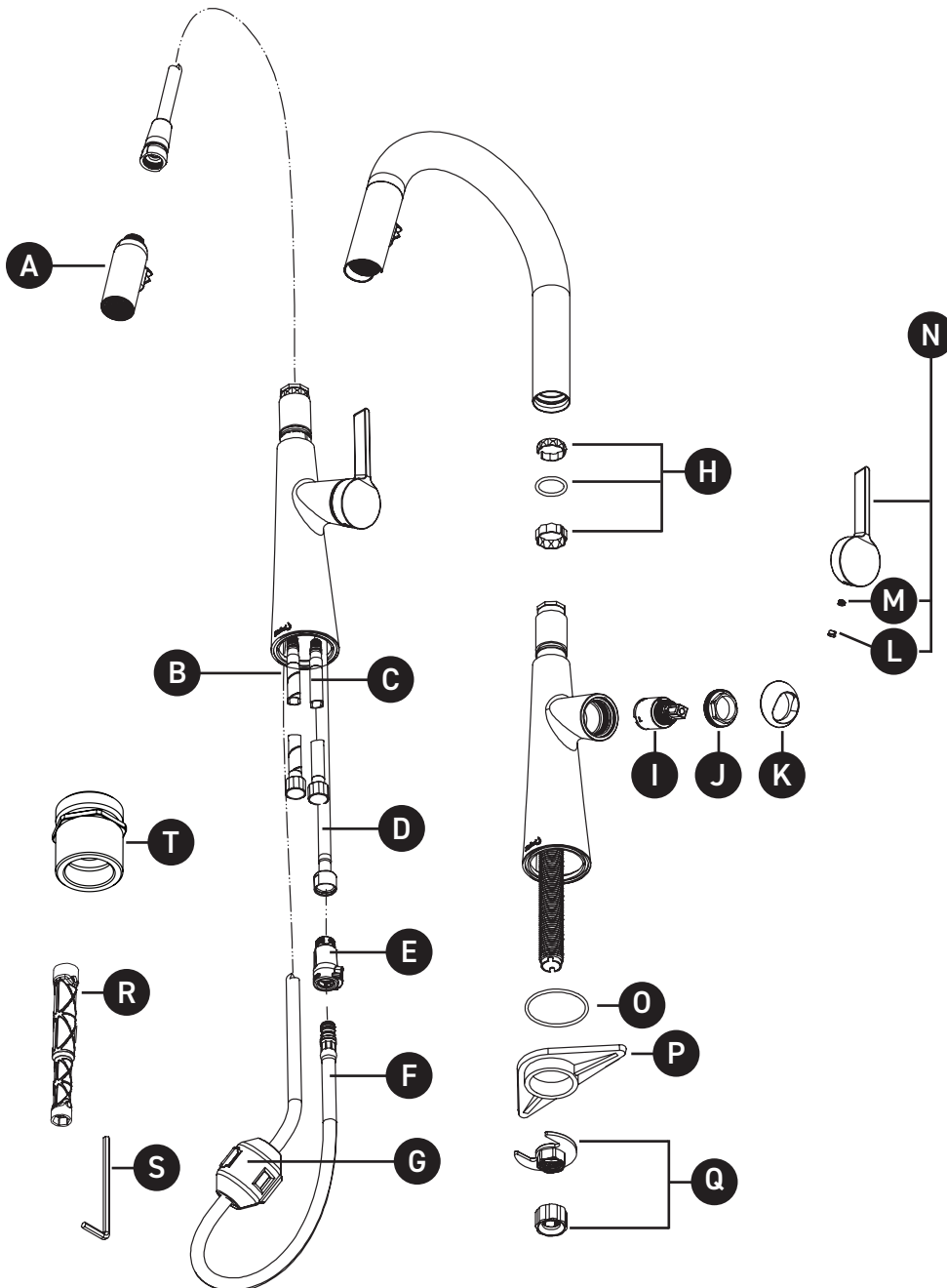
A DISTINCTIVE MEMBER OF THE HOUSE OF ROHL

ORDINE IN BASE AL CODICE ARTICOLO

## PARTI ILLUSTRATE

### LK101-EM

Rubinetto cucina Ludik con doccetta



| ID | Kit numero           | Finitura     |
|----|----------------------|--------------|
| A  | S4-381-EM            | N/A          |
| B  | S7-108-R-EM (Caldo)  | N/A          |
| C  | S7-108-B-EM (Freddo) | N/A          |
| D  | S7-128-EM            | N/A          |
| E  | S7-443               | N/A          |
| F  | S7-200               | N/A          |
| G  | S9-528               | N/A          |
| H  | S7-489               | N/A          |
| I  | S401-039-EM          | N/A          |
| J  | S305-337             | N/A          |
| *K | S052-073             | Guarda sotto |
| *L | S003-030             | Guarda sotto |
| M  | S152-040             | N/A          |
| *N | S1-894               | Guarda sotto |
| O  | S225-460             | N/A          |
| P  | S390-085             | N/A          |
| Q  | 208331               | N/A          |
| R  | S500-009             | N/A          |
| S  | S505-025 (2.5mm)     | N/A          |
| T  | S7-996-EM            | N/A          |

Il suffisso del codice articolo indica la finitura

| Finitura | Descrizione          |
|----------|----------------------|
| C        | Cromo lucidato       |
| BK       | Nero                 |
| BG       | Oro spazzolato (PVD) |
| SS       | Acciaio (PVD)        |

+44 (0)1952 221 100  
www.riobel.design

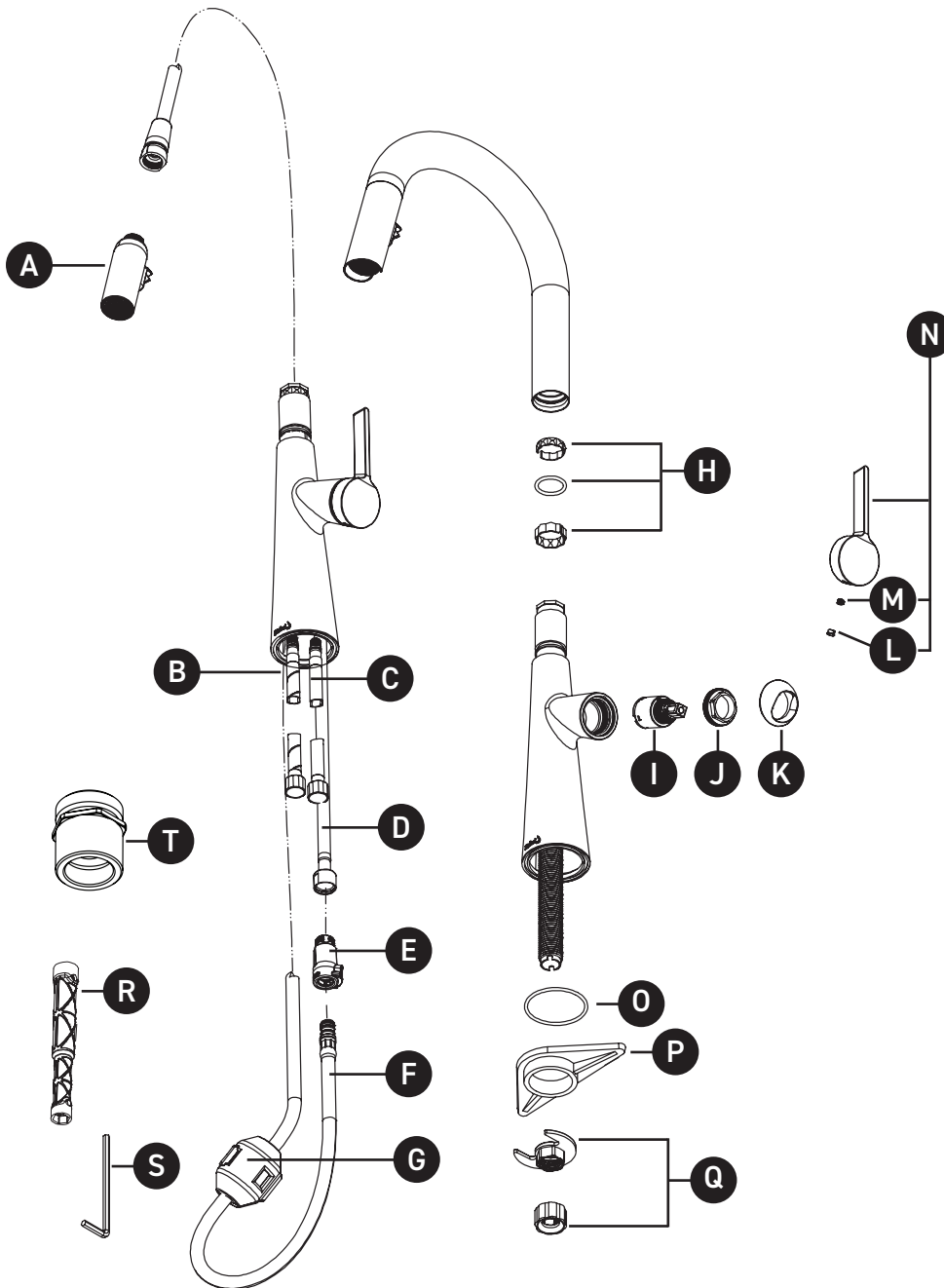
A DISTINCTIVE MEMBER OF THE HOUSE OF ROHL

PEDIR POR NÚMERO DE REFERENCIA

## PIEZAS ILUSTRADAS

### LK101-EM

Grifo monomando de cocina Ludik con ducha



| ID | Referencia del kit     | Acabado       |
|----|------------------------|---------------|
| A  | S4-381-EM              | N/A           |
| B  | S7-108-R-EM (Caliente) | N/A           |
| C  | S7-108-B-EM (Frio)     | N/A           |
| D  | S7-128-EM              | N/A           |
| E  | S7-443                 | N/A           |
| F  | S7-200                 | N/A           |
| G  | S9-528                 | N/A           |
| H  | S7-489                 | N/A           |
| I  | S401-039-EM            | N/A           |
| J  | S305-337               | N/A           |
| *K | S052-073               | Ver más abajo |
| *L | S003-030               | Ver más abajo |
| M  | S152-040               | N/A           |
| *N | S1-894                 | Ver más abajo |
| O  | S225-460               | N/A           |
| P  | S390-085               | N/A           |
| Q  | 208331                 | N/A           |
| R  | S500-009               | N/A           |
| S  | S505-025 (2.5mm)       | N/A           |
| T  | S7-996-EM              | N/A           |

#### Acabado determinado por el sufijo

| Acabado | Descripción            |
|---------|------------------------|
| C       | Cromado brillante      |
| BK      | Negro                  |
| BG      | Oro cepillado (PVD)    |
| SS      | Acero inoxidable (PVD) |

+44 (0)1952 221 100  
www.riobel.design

A DISTINCTIVE MEMBER OF THE HOUSE OF ROHL